

*27th Sunday  
in Ordinary Time  
October 8, 2023*



# Christ Is Made the Sure Foundation 642



1. Christ is made the sure foun - da - tion, Christ the head and  
2. To this tem - ple where we call you, Come, O Lord of  
3. Grant, we pray, to all your peo - ple, All the grace they



cor - ner-stone; Cho - sen of the Lord, and pre - cious,  
hosts, to - day; With your wont - ed lov - ing kind - ness  
ask to gain; What they gain from you for ev - er



Bind - ing all the Church in one; Ho - ly Zi - on's  
Hear your ser - vants as they pray, And your full - est  
With the bless - ed to re - tain, And here - af - ter



help for ev - er, And her con - fi - dence a - lone.  
ben - e - dic - tion Shed in all its bright ar - ray.  
in your glo - ry Ev - er - more with you to reign.

Text: *Angularis fundamentum*; 11th C.; tr. by John M. Neale, 1818-1866, alt.  
Tune: ST. THOMAS, 8 7 8 7 8 7; John Wade, 1711-1786

# 27TH SUNDAY IN ORDINARY TIME

October 8

**Responsorial Psalm:** Psalm 80:9, 12, 13–14, 15–16, 19–20 (139)

**Response:** (Organ/SATB)

Optional Descant

The vine - yard of the Lord, the house of Is - ra - el.

G Gmaj7/B Cadd9 C D G/B C G

The vine-yard of the Lord is the house of Is - ra - el.

**Verses:** (Cantor or SATB)

G Em

1. A vine from Egypt you It put forth its foliage to	trans - planted; the Sea,
2. Why have you broken down The boar from the forest lays	its walls, it waste,
3. Once again, O LORD Take care of The son	of hosts, this vine, of man
4. Then we will no more O LORD, God of hosts,	with - draw from you; re - store us;

Am/C D G

1. You drove away the Its shoots as far	na - tions as	and the	planted it. River.
2. So that every passer-by And the beasts of the field	plucks feed	its up -	fruit, on it?
3. Look down from And protect what your right Whom you	heav - en, hand your - self	and has made	see; planted, strong.
4. Give us new life, and we will call If your face shine upon us, then we	up - on shall	your be	name. saved.

**Gospel Acclamation:** cf. John 15:16

**Acclamation:** (Organ/SATB) No. VII

Optional Descant

Al - le - lu - ia, al - le - lu - ia, al - le - lu - ia.

D G/B Asus4 A G Dadd9 D G/B A7/C# D

Al - le - lu - ia, al - le - lu - ia, al - le - lu - ia.

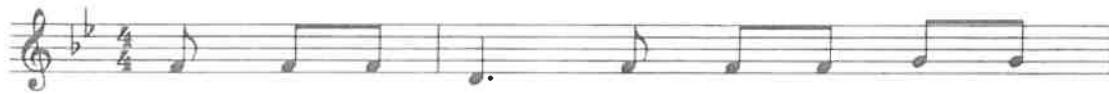
**Verse:** (Cantor or SATB)

I have cho - sen you from the world, says the

Lord, to go and bear fruit, fruit that will re - main.

F#sus4 F# D A/C# Bm Bm/A G Asus4 A D

## How Great Thou Art 496



1. O Lord my God, when I in awe - some  
 2. When thru the woods and for - est glades I  
 3. And when I think that God, His Son not  
 4. When Christ shall come with shout of ac - cla -



won - der Con - sid - er all the worlds Thy hands have  
 wan - der And hear the birds sing sweet - ly in the  
 spar - ing, Sent Him to die, I scarce can take it  
 ma - tion And take me home, what joy shall fill my



made, I see the stars, I hear the roll - ing  
 trees, When I look down from loft - y moun - tain  
 in That on the cross, my bur - den glad - ly  
 heart! Then I shall bow in hum - ble ad - o -



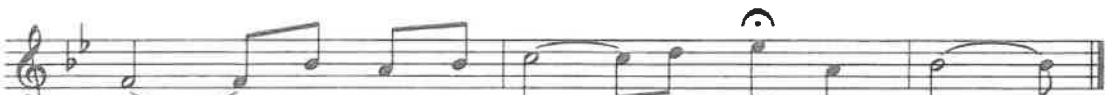
thun - der, Thy pow'r thru - out the un - i - verse dis - played!  
 gran - deur And hear the brook and feel the gen - tle breeze.  
 bear - ing, He bled and died to take a - way my sin!  
 ra - tion And there pro-claim, my God, how great Thou art!



Then sings my soul, my Sav-ior God, to Thee; How great Thou



art, how great Thou art! Then sings my soul, my Sav-ior God, to



Thee; How great Thou art, How great Thou art!

## Here I Am, Lord 671

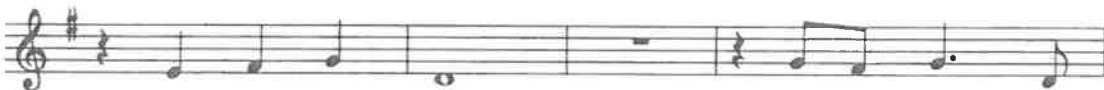
## Verses



1. I, the Lord of sea and sky, I have heard my  
 2. I, the Lord of snow and rain, I have borne my  
 3. I, the Lord of wind and flame, I will tend the



peo - ple cry. All who dwell in dark and sin  
 peo - ple's pain. I have wept for love of them.  
 poor and lame. I will set a feast for them.



My hand will save. I who made the  
 They turn a - way. I will break their  
 My hand will save. Fin - est bread I



stars of night, I will make their dark - ness bright.  
 hearts of stone, Give them hearts for love a - lone.  
 will pro - vide Till their hearts be sat - is - fied.



Who will bear my light to them? Whom shall I send?  
 I will speak my word to them. Whom shall I send?  
 I will give my life to them. Whom shall I send?

## Refrain



Here I am, Lord. Is it I, Lord? I have heard you



call - ing in the night. I will go, Lord, if you



lead me. I will hold your peo - ple in my heart.

Pan de Vida 811

Refrain

\*Pan de Vi - da, cuer-po del Se - ñor,  
cup of bless - ing, blood of Christ the Lord.  
At this ta - ble the last shall be first, \*\*po -  
der es ser - vir, por-que Dios es a - mor.

Verses

1. We are the dwell-ing of God,  
\*\*\*2. Us - te - des me lla - man "Se - ñor," me in-  
3. There is no Jew or Greek,  
fra - gile and wound-ed and weak. We are the  
cli - no\_a la - var - les los pies: Ha - gan lo  
there is no slave or free; there is no  
bod - y of Christ, called to be the com -  
mis - mo, hu - mil - des, sir - vién - do - se  
wom - an or man; on - ly heirs of the  
pas - sion of God. D.C.  
u - nos a o - tros.  
prom - ise of God.

*\*Bread of Life, body of the Lord, \*\*power is for service, because God is Love.*

*\*\*\*You call me "Lord," and I bow to wash your feet:*

*you must do the same, humbly serving each other.*

# Sweet Queen of Peace of Medjugorje

♩ = 72

## Intro

3  
I

## Verse 1

5 stood up - on the hill a - bove the vil-liage, and  
7 gazed down on the val - ley there be low, and  
9 won dered why she chose six - lit tle chil - dren, to  
11 tell the world to pray and let us know that

## Verse 2

13 peace we all\_ could have\_ just stop and pray for it, to  
15 give her all our trou bles and our cares - - - and  
17 she will ask her son to bless and keep us, in the  
19 hol low of\_ his hand for love is there. A -

## Ch1

21 ve A - ve A - ve A - ve Ma - ri a, Look


Ab Bb/Ab Ab Bb/Ab Ab



2

23 Eb Bb7 Eb Ebmaj7 Eb7  
  
 down up - on your chil - dren in this world, A -


25 Ab Bb/Ab Ab Bb/Ab Ab  
  
 ve A - ve A - ve A - ve Ma - ri a, Look


27 Fm Gm/Bb Bb7 Eb(add9)  
  
 us in to the pre - sence of the Lord.

**Piano Interlude**


29  
  
 I

**Verse 3**

31  
  
 tells us to reach out to one a - noth - er, To

33  
  
 ne - ver turn our backs on those in need, And

35  
  
 when the world is dark and full of worry, She'll

37  
  
 hur - ry to our aid and in - ter - cede. I

**Verse 4**

39  
  
 she'll ne - ver leave us or for - sake - us, And

41  
  
 from our side she ne - ver will be far. And


43  
  
 with her Son she will pro - tect and keep us, Sweet

45  
  
 Queen of Peace of Med - ju - gor - ie.

47 **Db1 Ch2**  
  
 ve A - ve A - ve A - ve Ma - ri a, Look

49  
  
 down up - on your chil - dren in this world, A -

51  
  
 ve A - ve A - ve A - ve Ma - ri a, Look

53  
  
 us in to the pre - sence of the Lord. A -

55  
  
 ve A - ve A - ve A - ve Ma - ri a, We


57  
  
 come from lands both near and far, A -

59  
  
 ve A - ve A - ve A - ve Ma - ri a, Sweet

**Outro**

4


61 E<sub>b</sub>(add9)



Queen of Peace of Med - ji - go - r - e

Detailed description: This block contains the musical notation for measure 61. It is written on a single treble clef staff with a key signature of two flats (B-flat and E-flat) and a common time signature. The melody consists of a sequence of eighth notes: G4, A4, B-flat4, C5, D5, E5, F5, G5. The final note is a half note G5. The lyrics 'Queen of Peace of Med - ji - go - r - e' are aligned under the notes. A guitar fingering '8' is indicated below the first note. A guitar chord instruction 'E<sub>b</sub>(add9)' is written above the staff on the right side.

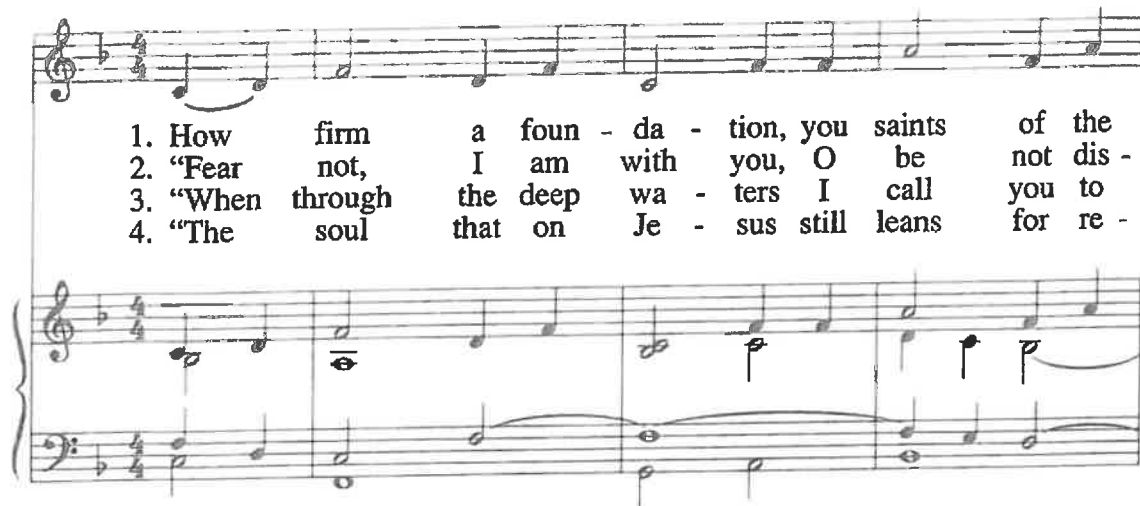
63




**4**

Detailed description: This block contains the musical notation for measure 63. It is written on a single treble clef staff with a key signature of two flats and a common time signature. The staff is mostly empty, with a thick black bar across it, indicating a whole rest. A guitar fingering '8' is indicated below the first note. A guitar chord instruction '4' is written above the staff in the center.

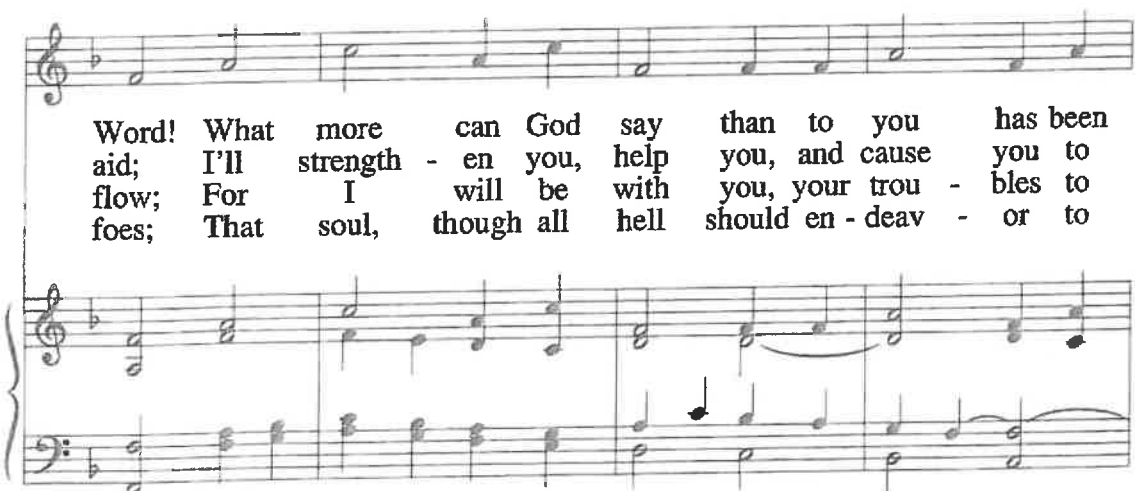
## 587 How Firm a Foundation



1. How firm a foun - da - tion, you saints of the  
 2. "Fear not, I am with you, O be not dis -  
 3. "When through the deep wa - ters I call you to  
 4. "The soul that on Je - sus still leans for re -



Lord, Is laid for your faith in this ex - cel - lent  
 mayed, For I am your God, and will still give you  
 go, The riv - ers of woe shall not you o - ver -  
 pose, I will not, I will not de - sert to its



Word! What more can God say than to you has been  
 aid; I'll strength - en you, help you, and cause you to  
 flow; For I will be with you, your trou - bles to  
 foes; That soul, though all hell should en - deav - or to

TRUST

The image shows a musical score for the hymn 'Trust'. It consists of two staves. The top staff is a vocal line in treble clef with a key signature of one flat (B-flat) and a 4/4 time signature. The bottom staff is a piano accompaniment in bass clef. The lyrics are written below the vocal staff. The lyrics are: 'said, To you who for ref - uge to Je - sus have fled? stand, Up - held by my right - eous, om - nip - o - tent hand. bless, And sanc - ti - fy to you, your deep - est dis - tress. shake, I'll nev - er, no nev - er, no nev - er for - sake!'

Text: 2 Peter 1:4; "K" in Rippon's *A Selection of Hymns*, 1787  
Tune: FOUNDATION, 11 11 11 11; Funk's *Compilation of Genuine Church Music*, 1832; harm. by Richard Proulx, b.1937, © 1975,  
GIA Publications, Inc.